



Wintech 12 Pro

CORE I5-5TH GENERATION



Hard Disk

256 GB SSD



Operation

WINDOWS 10



Resolution

1366* 768



Power Supply

(110-240VAC 50-60HZ)
12V 5A/12V 10A



CPU

INTEL CORE I5 5 GENERATION



Memory

DDR4 8GB



Interface

USB*6, INTERNET PORT*1,
PARALLEL PORT*1, SERIAL
PORT*1



Printer

IN-BUILT 80MM AUTO
CUTTER THERMAL
PRINTER SPEED 230MM/SEC



Working Environment

WORKING TEMPERATURE
0°C~+40°C STORAGE
TEMPERATURE: -10°C~+60°C



Touch Screen Type

MULTI POINT
CAPACITIVE



2 PORT



CUSTOMER
DISPLAY

OPTIONAL CONFIGURATION



VFD CUSTOMER DISPLAY



2D SCANNER



MSR / NFC / RFID

CONNECT IT TO ALL THE PERIPHERAL DEVICES THAT YOUR BUSINESS



Rich Interface

VGA

Port (x1)

COM

Port (x1)

LAN

Port (x1)

USB 2.0

Port (x2)

USB 3.0

Port (x4)

POWER CONNECTION

Port (x1)

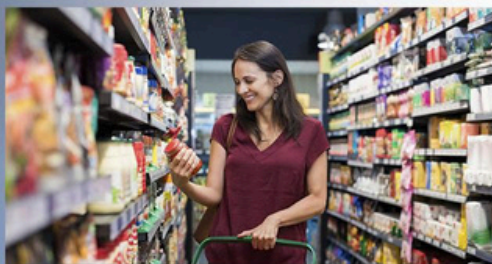
CASH DRAWER (RJ11)

Port (x1)

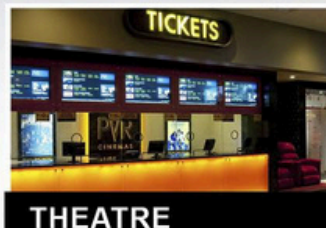




JEWELLERY SHOP



GROCERY STORE



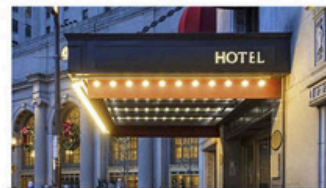
THEATRE



BUS TICKET COUNTER



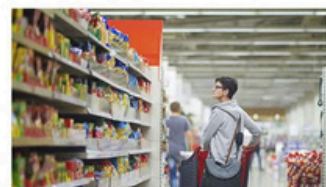
RETAIL SHOP



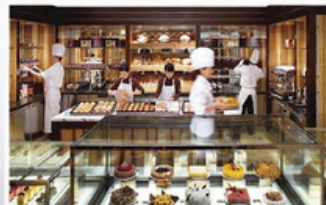
HOTEL



SWEET SHOP



SUPERMARKET



BAKERY



RESTAURANT

**OUR
SEGMENTS**

Certificates. Test Reports



Our billing machines are designed to meet the highest industry standards, ensuring reliability and precision in every transaction. Each product is rigorously tested and certified for:

Quality Assurance: Built with durable materials and cutting-edge technology.

Compliance Standards: Certified to meet international safety and performance regulations.

Eco-Friendly Design: Adhering to environmentally responsible manufacturing practices.



319, 3rd Floor, Tower-4, ABC
Building, Sector-135, Noida-201304

CONTACT US

1800 2700 263

www.udyamapos.com

udyamapos@gmail.com

