

Wintech 508 Pro



CORE i5
8th Generation



PRODUCT SUMMARY



TOUCHSCREEN INTERFACE

User-friendly touch interface for easy navigation and transaction processing.



BARCODE SCANNER

Integration with a barcode scanner for efficient product scanning and inventory management



CASH DRAWER INTEGRATION

Integration with a cash drawer for efficient transaction processing and inventory management



PAYMENT OPTIONS

Support for various payment methods such as cash, credit/debit cards, and digital wallets



INVENTORY MANAGEMENT

Tools for tracking and managing product inventory, including stock levels and reordering alerts



CUSTOMER MANAGEMENT

Database for storing customer information and purchase history for personalized service



CUSTOMIZABLE SETTINGS

Adjustable settings to accommodate specific business requirements and preferences



REMOTE MONITORING

Remote access and monitoring capabilities for business owners or managers



SECURITY FEATURES

Security measures like user authentication, access controls, and data encryption for safeguarding sensitive information.



COMPATIBILITY WITH PERIPHERALS

Support for additional peripherals like customer displays, card readers, and more

THE ULTIMATE WINDOW POS BILLING SOLUTIONS

CORE i5



- 1** Access Anytime
- 2** Faster Checkouts
- 3** Business Development
- 4** Stock Control
- 5** Accounts
- 6** Online Shop

PRODUCT Description

These machines are usually compact and durable, designed to withstand various environmental conditions, including exposure to sunlight and potential spills

Front view



Back side view



Left side view



Right Side view



side view




PRODUCT

Specification


 **PROCESSOR**
intel Core i5 8th generation

 **SYSTEM MEMORY**
DDR4, 8GB , Max support 32 GB


 **STORAGE**
M.2 256GB SSD Max Storage 1 TB

 **POWER SUPPLY**
12V

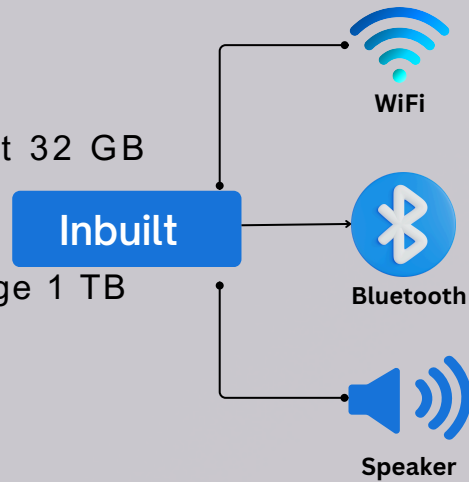
 **OS SUPPORT**
Windows 11 iot / Professional

 **DISPLAY**
15.6"

 **RESOLUTION**
1366x768/1920x1080 Optional resolution - 1920 x 1080

 **TOUCH**
Multi Touch Capacitive Screen, IP 65,

 **BRIGHTNESS**
350 nits



I/O & *EXPANSION*



4 USB
Port (3.0)



2 USB
Port (2.0)



4 USB Port (3.0)



2 USB Port (2.0)



Ethernet



2 Power



Audio Jack



VGA Port



HDMI Port

OUR SEGMENTS



JEWELLERY SHOP



GROCERY SHOP



THEATRE



RETAIL SHOP



SWEET SHOP



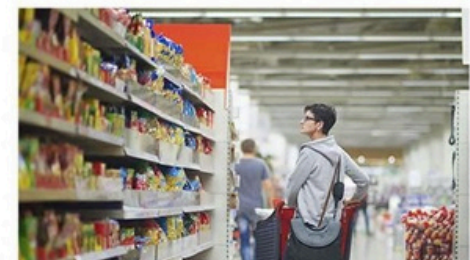
BAKERY



BUS TICKET COUNTER



HOTEL



SUPERMARKET



RESTAURANT

Certificates. Test Reports



Our billing machines are designed to meet the highest industry standards, ensuring reliability and precision in every transaction. Each product is rigorously tested and certified for:

Quality Assurance: Built with durable materials and cutting-edge technology.

Compliance Standards: Certified to meet international safety and performance regulations.

Eco-Friendly Design: Adhering to environmentally responsible manufacturing practices.



319, 3rd Floor, Tower-4, ABC
Building, Sector-135, Noida-201304

CONTACT US

1800 2700 263

www.udyamapos.com

udyamapos@gmail.com

