

India's No.1 Billing
Solutions



CORE i7

6th Generation

W INTECH 706
(WINDOW POS)



PRODUCT

SUMMARY



TOUCHSCREEN INTERFACE

User-friendly touch interface for easy navigation and transaction processing.



BARCODE SCANNER

Integration with a barcode scanner for efficient product scanning and inventory management



CASH DRAWER INTEGRATION

Integration with a barcode scanner for efficient product scanning and inventory management



PAYMENT OPTIONS

Support for various payment methods such as cash, credit/debit cards, and digital wallets



INVENTORY MANAGEMENT

Tools for tracking and managing product inventory, including stock levels and reordering alerts



CUSTOMER MANAGEMENT

Database for storing customer information and purchase history for personalized service



CUSTOMIZABLE SETTINGS

Adjustable settings to accommodate specific business requirements and preferences



REMOTE MONITORING

Remote access and monitoring capabilities for business owners or managers



SECURITY FEATURES

Security measures like user authentication, access controls, and data encryption for safeguarding sensitive information.



COMPATIBILITY WITH PERIPHERALS

Support for additional peripherals like customer displays, card readers, and more

THE ULTIMATE *WINDOW POS BILLING* SOLUTIONS

CORE i7



- 1 Access Anytime**
- 2 Faster Checkouts**
- 3 Business Development**
- 4 Stock Control**
- 5 Accounts**
- 6 Online Shop**

PRODUCT DISCRIPTION

These machines are usually compact and durable, designed to withstand various environmental conditions, including exposure to sunlight and potential spills



FRONT VIEW



BACK SIDE VIEW



LEFT SIDE VIEW



RIGHT SIDE VIEW

PRODUCT

SPECIFICATION



PROCESSOR
intel Core i7 - 6th Generation



SYSTEM MEMORY
DDR4 , 4/8/16GB



STORAGE
M.2 128/256/512 GB



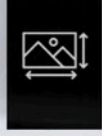
POWER SUPPLY
12V



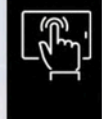
OS SUPPORT
Win10 iot 64bit / Win 10 Pro 64bit



LCD PANEL
15" TFT LCD



RESOLUTION
1024*768



TOUCH
PCAP Touch IP65 on pane



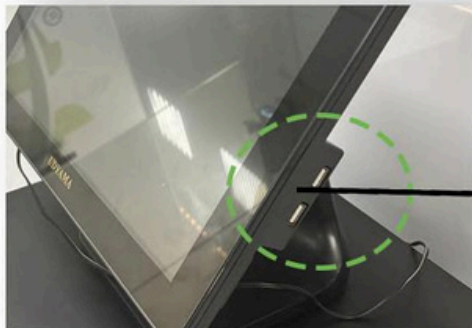
BRIGHTNESS
350 nits



I/O EXPENSION



USB 3.0



USB 2.0

 4 USB Port (3.0)

 2 USB Port (2.0)

 Ethernet

 Power

 Audio Jack

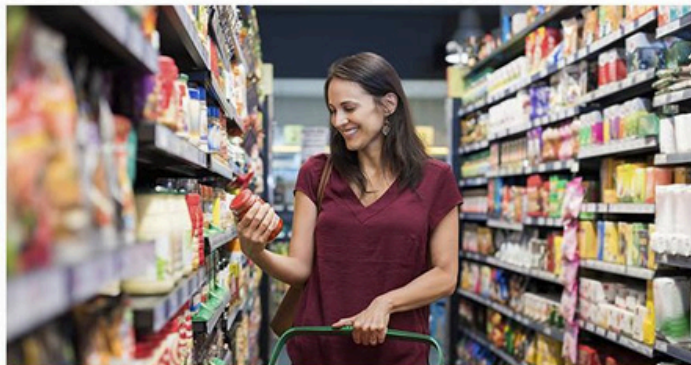
 VGA Port

 HDMI Port

OUR SEGMENTS



JEWELLERY SHOP



GROCERY STORE



THEATRE



RETAIL SHOP



SWEET SHOP



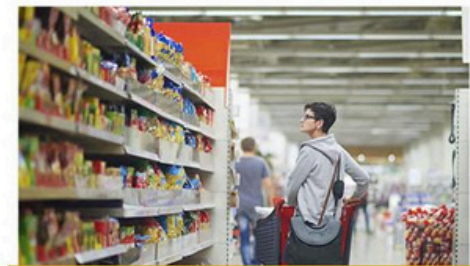
BAKERY



BUS TICKET COUNTER



HOTEL



SUPERMARKET



RESTAURANT

Certificates. Test Reports



Our billing machines are designed to meet the highest industry standards, ensuring reliability and precision in every transaction. Each product is rigorously tested and certified for:

Quality Assurance: Built with durable materials and cutting-edge technology.

Compliance Standards: Certified to meet international safety and performance regulations.

Eco-Friendly Design: Adhering to environmentally responsible manufacturing practices.



319, 3rd Floor, Tower-4, ABC
Building, Sector-135, Noida-201304

CONTACT US

1800 2700 263

www.udyamapos.com

udyamapos@gmail.com

