

W INTECH 710 (WINDOW POS)



CORE i7

10th Generation

THE ULTIMATE *WINDOW POS BILLING* SOLUTIONS

CORE i7



- 1 Access Anytime**
- 2 Faster Checkouts**
- 3 Business Development**
- 4 Stock Control**
- 5 Accounts**
- 6 Online Shop**

PRODUCT SUMMARY



TOUCHSCREEN INTERFACE

User-friendly touch interface for easy navigation and transaction processing.



BARCODE SCANNER

Integration with a barcode scanner for efficient product scanning and inventory management.



CASH DRAWER INTEGRATION

Integration with a cash drawer for efficient product scanning and inventory management.



PAYMENT OPTIONS

Support for various payment methods such as cash, credit/debit cards, and digital wallets.



INVENTORY MANAGEMENT

Tools for tracking and managing product inventory, including stock levels and reordering alerts.



CUSTOMER MANAGEMENT

Database for storing customer information and purchase history for personalized service.



CUSTOMIZABLE SETTINGS

Adjustable settings to accommodate specific business requirements and preferences.



REMOTE MONITORING

Remote access and monitoring capabilities for business owners or managers.



SECURITY FEATURES

Security measures like user authentication, access controls, and data encryption for guarding sensitive information.



COMPATIBILITY WITH PERIPHERALS

Support for additional peripherals like customer displays, card readers, and more.



PRODUCT DISCRIPTION

These machines are usually compact and durable, designed to withstand various environmental conditions, including exposure to sunlight and potential spills



FRONT VIEW



BACK SIDE VIEW



LEFT SIDE VIEW



RIGHT SIDE VIEW

PRODUCT

SPECIFICATION



PROCESSOR
intel Core i7 - 10th Generation



SYSTEM MEMORY
DDR4 , 8GB



STORAGE
M.2 128GB SSD



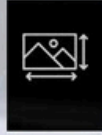
POWER SUPPLY
12V



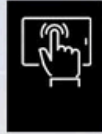
OS SUPPORT
Win10 iot 64bit / Win 10 Pro 64bit



LCD PANEL
15" TFT LCD



RESOLUTION
1024*768



TOUCH
PCAP Touch IP65 on pane



BRIGHTNESS
350 nits



I/O **EXPANSION**



USB 3.0



USB 2.0



4 USB Port (3.0)



2 USB Port (2.0)



Ethernet



Power



Audio Jack



VGA Port



HDMI Port



JEWELLERY SHOP



THEATRE



BUS TICKET COUNTER



GROCERY STORE



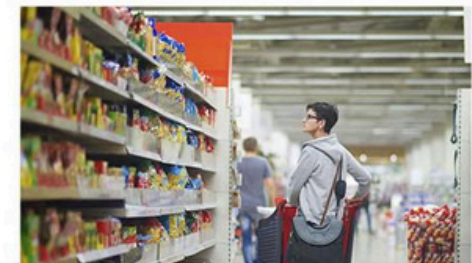
RETAIL SHOP



HOTEL



SWEET SHOP



SUPERMARKET



BAKERY



RESTAURANT

**OUR
SEGMENTS**

Certificates. Test Reports



Our billing machines are designed to meet the highest industry standards, ensuring reliability and precision in every transaction. Each product is rigorously tested and certified for:

Quality Assurance: Built with durable materials and cutting-edge technology.

Compliance Standards: Certified to meet international safety and performance regulations.

Eco-Friendly Design: Adhering to environmentally responsible manufacturing practices.



319, 3rd Floor, Tower-4, ABC
Building, Sector-135, Noida-201304

CONTACT US

1800 2700 263

www.udyamapos.com

udyamapos@gmail.com

